



Why choose Skin Packaging?

Innovative Design

- Outstanding display of product quality and visual appeal
- Vertical display and space saving
- Special smooth wall design of the tray for better skin effect
- Consumer appeal and convenience
- Merchandising possibilities
- Specific shape for easy denesting
- Available in a wide range of colours

High Performance Quality

- EOST - Specific structure for easy opening and Strong Seal strength
- Well-protected for secured food quality and aroma
- Better skin effect without tray distortion
- Product protection
- Optional pre-padding
- In-pack meat maturation for better tenderness
- Suitable for high protrusion packaging

Environmental Benefits

- Longer shelf life
- Less food waste
- Improved logistics
- Less weight per tray
- Reduced carbon footprint

Trays Compatible with PE film

system which enables:

- Higher productivity thanks to the new tooling design and fastest vacuum cycles
- No skeletal waste - saving up to 40%
- Significant increase of production line speed
- Even better skin effect thanks to the innovative vacuum process



1520 Range

Dimensions: 197mm x155mm
 Depths: 30mm
 Material: PP-EVOH



1523 Range

Dimensions: 232mm x147mm
 Depths: 13mm, 25mm, 30mm, 39mm & 55mm
 Material: PP-EVOH



1624 Range

Dimensions: 238mm x166mm
 Depths: 13mm & 27mm
 Material: PP-EVOH



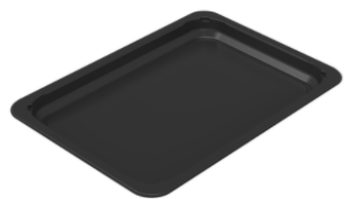
1825 Range

Dimensions: 253mm x 183mm
 Depths: 13mm, 15 mm, 25mm, & 35mm
 Material: PP-EVOH



2197 Range

Dimensions: 198mmx 156mm
 Depths: 30mm
 Material: PP-EVOH



2303 Range

Dimensions: 304mm x212mm
 Depths: 20mm
 Material: PP-EVOH



1419 Range

Dimensions: 190mm x 144mm
 Depths: 35mm, 40mm
 Material: PP-EVOH



1421 Range

Dimensions: 212mm x 140mm
 Depth: 19mm & 25 mm
 Material: PP-EVOH



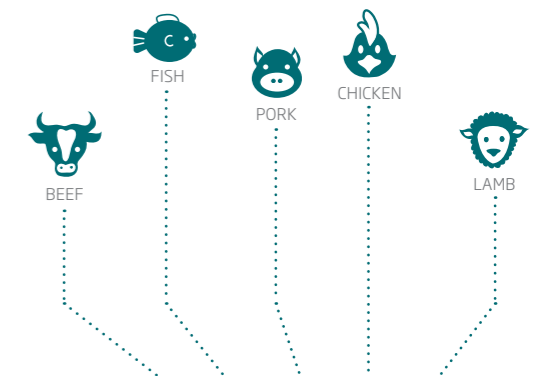
1826 Range

Dimensions: 262mm x 180mm
 Depths: 12mm & 26mm
 Material: PP-EVOH



1826SW Range

Dimensions: 260mm x 177mm
 Depths: 13mm, 27mm & 45mm
 Material: PP-EVOH



Recommended for all types of meat